

560w / 660w / 760w / 850w

X-SERIES



Advanced DC Power Conversion Technology for Ultimate Performance



Special Features

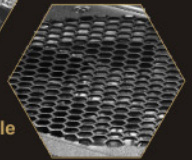
- 80PLUS® Gold Certified Super High Efficiency
- Seasonic DC Connector Module with Integrated Voltage Regulator Module*(Patent Pending)
- DC to DC Converter Design
- Seasonic Hybrid silent Fan Control *(Patent Pending)
- Sanyo Denki - San Ace Silent Fan
- Conductive Polymer Aluminum Solid Electrolytic Capacitors
- High Reliability 105°C Grade A Capacitors
- Tight Voltage Regulation [±3%]
- Active Power Factor Correction [99% PF Typical]
- High +12V Output
- High Current Gold Plated Terminals
- Dual Sided PCB Layout
- Ultra Ventilation [Honeycomb Structure]
- Full Modular Cabling Design
- Multi-GPU Technologies Supported
- All-in-One DC Cabling Design
- Easy Swap Connector
- Universal AC Input [Full Range]
- 5 Years Warranty



High Quality 105°C Cap



Patented DC connector Module



Honeycomb Structure

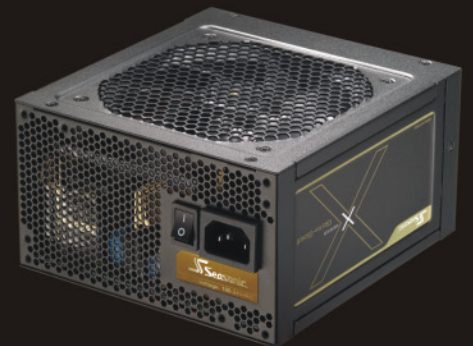
Full Modular Cabling

Power Distribution

Model	+3.3V	+5V	+12V	-12V	+5Vsb	Total Power
X-560	25A	25A	46A	0.5A	3A	560W
	125W		552W	6W	15W	
X-660	25A	25A	54A	0.5A	3A	660W
	125W		648W	6W	15W	
X-760	25A	25A	63A	0.5A	3A	760W
	125W		756W	6W	15W	
X-850	25A	25A	70A	0.5A	3A	850W
	125W		840W	6W	15W	

Wire Configuration

Model	Cable	Main Power (20 / 24P) 600mm	EPS12V / ATX12V (8P / 4P) 650mm	EPS12V (8P) 650mm	PCI-E (6P / 8P) 600mm	SATA	Peripheral (4P)	FDD(4P) (Y-adapter)
X-560		1	1	0	2	8	5	2
X-660		1	1	0	4	8	5	2
X-760		1	1	1	4	8	8	2
X-850		1	1	1	4	8	8	2



Safety & EMI / EMC

Protection Features: OPP / OVP / UVP / SCP / OCP / OTP

Specifications may change without prior notice



Headquarters tel: +886-2-2659-0338 fax: +886-2-2659-0530 sales@seasonic.com.tw www.seasonic.com
 USA Subsidiary tel: +1 626-969-9966 fax: +1 626-969-9986 usa@seasonic.com www.seasonicusa.com
 Europe Subsidiary tel: +31-10-226-2131 fax: +31-10-251-9947 europe@seasonic.com